

[www.amaschoolofmedicine.com](http://www.amaschoolofmedicine.com)



# AMA SCHOOL OF MEDICINE



STUDY in  
**Philippines**

Makati | Cavite  
CAMPUS

[www.amaschoolofmedicine.com](http://www.amaschoolofmedicine.com)



## ABOUT PHILIPPINES

Philippines is located in Southeast Asia. Nearby countries are Taiwan, Singapore, Malaysia, China, Indonesia and Singapore. It comprise of over 7000 islands. Philippines is the world's 12th most populous country with a population of 100 million.

Philippines is the 3rd largest English Speaking country in the World. 95% of the population speaks English which is the official language. 20,000+ foreign students go there each year for education in Engineering, Medical, Dental, Nursing, Management, English, etc.

The Capital city is Manila; a mega city with over 20 million population. Cultural influences are from Spain, US, Hindu & Islam. Philippines was part of Hindu Java Kingdom in 13th Century. In the 14th century Islam came. From 15th-18th century it was ruled by Spain; followed by America with a brief period of Japanese occupation in World War II.

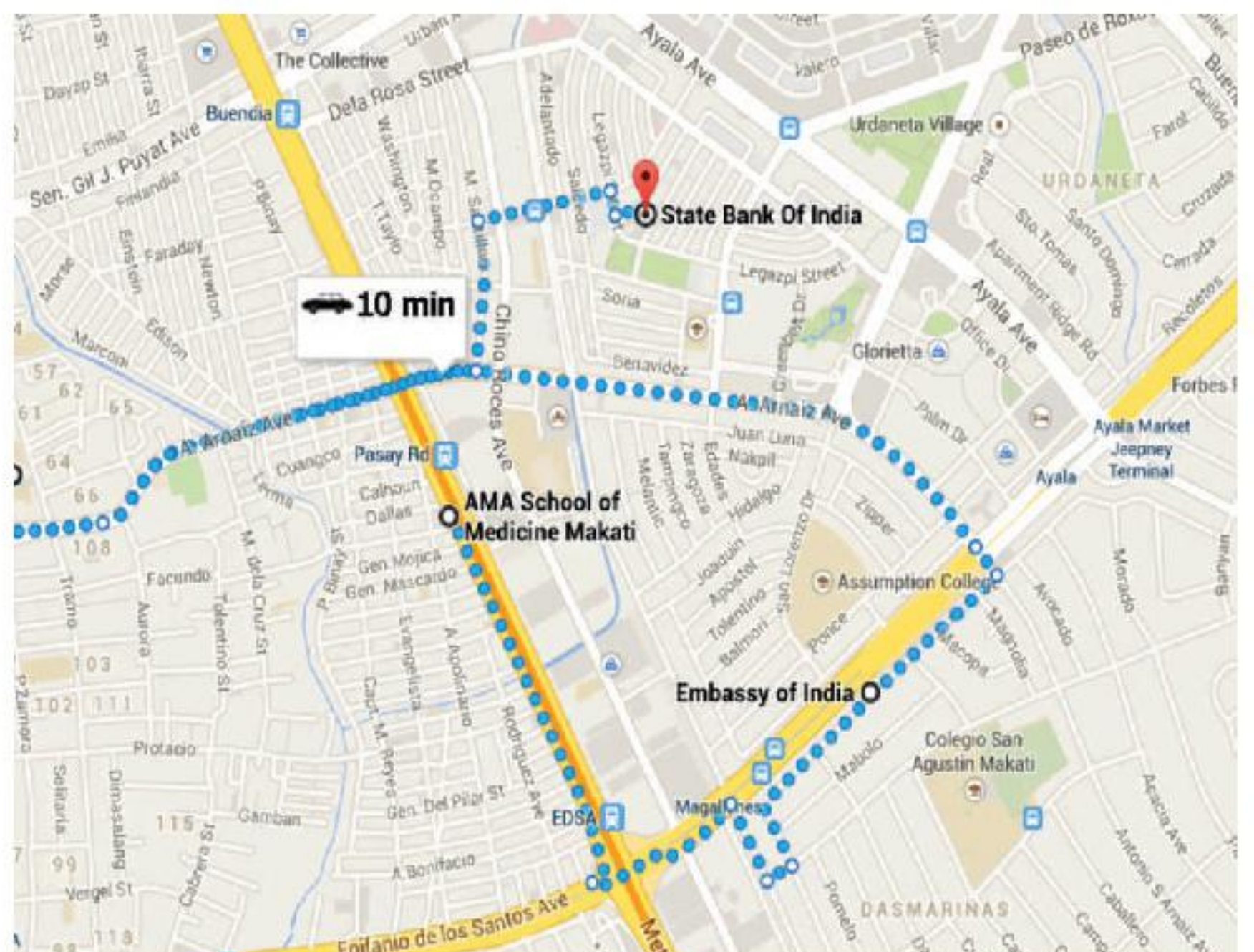
The dominant religion is Catholic Christianity with 93% of the country following it.

A Hindu Temple and Gurudwara are located in Manila. Embassy of India is located in Makati, Metro Manila - a distance of just 2.40 kms. from the AMA School of Medicine.

## AMA SCHOOL OF MEDICINE

The AMA School of Medicine has two campus - in **Makati** (heart of Manila) & **Cavite**. The building in Makati is ten floors and it shared with of AMA Computer College which was founded in 1980.

The School of Medicine is operational since 2008 when it was given permission by CHED to offer the Medical program. Both MD and Nursing programs are offered in the Makati Campus.





AMA Lecture Room

## ABOUT MAKATI

Makati is the financial center of the Philippines; it has the highest concentration of multinational and local corporations in the country. Major banks, corporations, department stores as well as foreign embassies are based in Makati. The biggest trading floor of the Philippine Stock Exchange is situated along the city's Ayala Avenue. Makati is also known for being a major cultural and entertainment hub in Metro Manila.

With a population of 529,039 Makati is the 16th-largest city in the country and ranked as the 41st most densely populated city in the world with 19,336 inhabitants per square kilometer. Although its population is just half a million, the daytime population of the city is estimated to be more than one million during a typical working day because of the large number of people who go to the city to work, shop, and do business.

Under the Köppen climate classification system, the city features a tropical monsoon climate. Its proximity to the equator means that the temperature range is very small, rarely going lower than 20 °C and going higher than 38 °C.

As of end-2012, Makati had registered over 62,000 business enterprises, which are engaged in financial services, wholesale/retail, services, real estate, export/import, and manufacturing. Makati also boasts of having the highest number of BPO offices in Metro Manila at 1,159 companies to date, as well as the highest number of PEZA-accredited IT Parks and Buildings.

### IN BRIEF

**Name of school**

AMA School of Medicine (Makati Campus)

**Address**

5486 South Super High Way,  
Cor. General Tinio St,  
Bangkal MAKATI,  
Metro Manila, Philippines

**Religion**

Christian (Catholic)

**Language of instruction**

English is an official language in Philippines

**Distance from airport**

6 kms from Ninoy Aquino International Airport, Manila

**Distance from embassy of India**

2.40 kms from Embassy of India in Makati, Manila

**Duration of course**

5 years after class XII

4 years after B.Sc / College

**Time of admission**

Rolling Admission year round

**Session begins**

Sept to Jan for 1<sup>st</sup> year international students

**Recognized by**

CHED, WHO, Medical Council of India (MCI) and also in more than 180 countries.

**Merit scholarship**

Minor financial assistance available to top 30% of the class.

**Placements**

Under discussion with Hospitals in Bahrain & India

**How to apply**

Send scanned copy of  
Class 10th Mark-sheet  
Class 12th Mark-sheet  
Passport (if available)

**E-mail documents to**

information@nvfoundation.com





AMA Students in hospital

## IN BRIEF

### Name of school

AMA School of Medicine (Cavite Campus)

### Address

Ara Vista Village  
Crisanto M. De Los Reyes Ave. Biclatan  
General Trias, 4109 Cavite, Philippines

### Religion

Christian (Catholic)

### Language of instruction

English is an official language in Philippines

### Distance from airport

28 kms from Ninoy Aquino International Airport,  
Manila

### Duration of course

5 years after class XII  
4 years after B.Sc / College

### Time of admission

Rolling Admission year round

### Session begins

Sept to Jan for 1<sup>st</sup> year international students

### Recognized by

CHED, WHO, Medical Council of India (MCI) and also  
in more than 180 countries.

### Merit scholarship

Minor financial assistance available to top 30% of the  
class.

### Placements

Under discussion with Hospitals in Bahrain & India

### How to apply

Send scanned copy of  
Class 10th Mark-sheet  
Class 12th Mark-sheet  
Passport (if available)

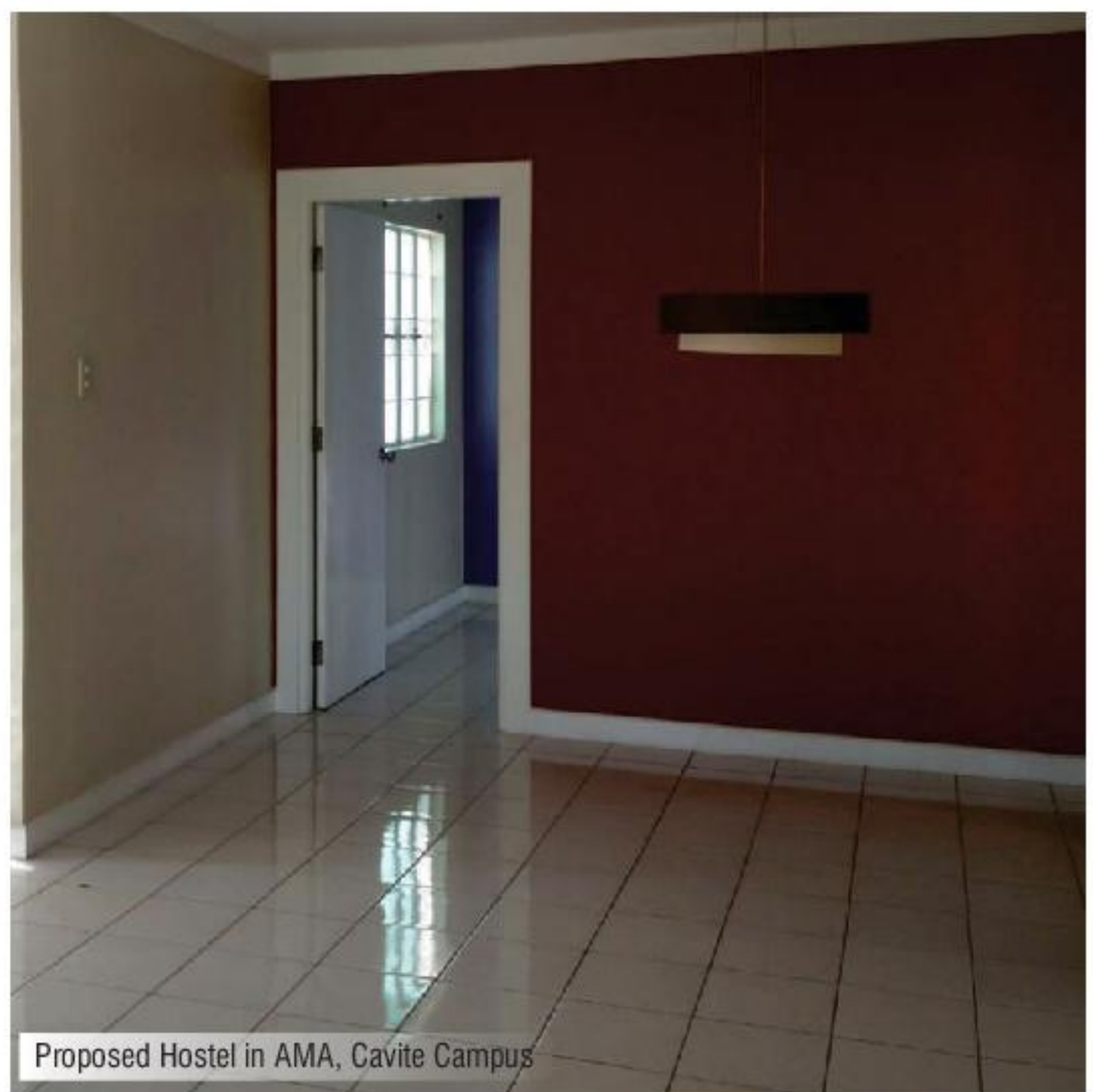
### E-mail documents to

information@nvfoundation.com

## ABOUT CAVITE

Cavite is a province in the Philippines located on the southern shores of Manila Bay in the Calabarzon region on Luzon island. It is one of the most industrialized and one of the fastest growing provinces in the country because of its close proximity to Metro Manila, located just 21 kilometers (13 mi) south of the capital. For over 300 years, the province has been known as the "Historical Capital of the Philippines".

Cavite is surrounded by Laguna province to the east, Metro Manila to the northeast, and Batangas province to the south. To the west lies the West Philippine Sea. Cavite is the second smallest province in the CALABARZON region.



Proposed Hostel in AMA, Cavite Campus



AMA Library

## ADVANTAGES OF EDUCATION IN PHILIPPINES

01. Education STANDARD is Excellent & Very HIGH Quality
02. Many USA educated professionals are Teachers and Administrators in Philippines
03. USA/American pattern of Education is followed
04. English is the Official Language of the Philippines
05. Low fees – 75% lower than fees in Private Schools in India
06. Easily accessible from India with daily flights to Philippines
07. Tropical Diseases similar to India BEST for clinical training - not there in China or Russia
08. Indian food available
09. Education gateway to countries like USA & UK
10. Philippines has educated & sent 2nd largest number of foreign Doctors to USA
11. Over 20,000 foreign students are enrolled and studying in The Philippines
12. Philippines is highest exporter of trained Nurses to the USA.
13. Highest MCI pass rate is from Philippines
14. Located in Makati, Business District of Metro Manila, Capital of Philippines

## OPPORTUNITIES FOR GLOBAL GROWTH

Opportunities to secure employment and residency in developed countries. Education gateway to countries like the UK, Australia and United States of America



AMA Lab



AMA, Cavite Hostel

## HOSTELAND LIVING CONDITIONS

The AMA School of Medicine has contracts with Apartments and boarding houses located within 500 meters radius for students which serve as its hostel. A range of housing options are available from non air conditioned to air conditioned rooms at prices ranging from 3,500 to 10,000 Pesos per month per bed on sharing basis.

There are plenty of eating places nearby. India food / catering arrangements are made for students from India. Laundry arrangements are there for students.



AMA, Cavite Hostel



### WEATHER

Summer is from March to May. Monsoon is from June to October. November to February is cool with fair and pleasant weather. Average day temperature, is 22.2 °C to 31.6 °C with humidity at 77 percent.



### TRANSPORT

Manila International Airport has several international flights from many countries. It is the gateway of international flights to Philippines. In Manila Buses, Jeepneys, LRT, and taxis are readily available in getting around the city



### LOCATION

Located in MAKATI - the Central Business district of Metro Manila It is 2.4 kms from the Embassy of India and 6.0 kms from the Ninoy Aquino International Airport Travel time to the Airport is 30 minutes and to the Embassy is 10 minutes by Taxi if the traffic is normal.

## LISTING / REGISTRATION:



**World Health  
Organization**

### WHO

The AMA School of Medicine is listed in the World Health Organization Directory of Medical Schools.



### CHED

AMA School of Medicine is registered with Commission of Higher Education (CHED) which is the Regulatory Body in the Philippines.



### MCI

Indian Students from AMA School of Medicine are eligible for MCI Screening test and be licensed to practice in India.



Armed Force of Philippines Hospital

## TRAINING HOSPITAL TIE UPS

The AMA School of Medicine has tie ups / affiliations with three hospitals for clerkship and practical exposure for its medical students. These are:

1. Pasay General Hospital
2. AFP Hospital (Armed Forces of Philippines Hospital)
3. Quirino Hospital.

There are over 1000 beds in these hospitals. There is a steady flow of patients providing an excellent training ground for students studying MD or MBBS. Students get ample structured exposure in these hospitals.

## PRACTICE IN OTHER COUNTRIES

Graduates are eligible to practice in all countries after they comply with the registration norms of the country they choose to practise in.

## PLACEMENTS

Discussions on going with Hospitals in India & Bahrain for Placements after graduation from AMA School of Medicine



Quirino Memorial Hospital, AMA (Tie-up)

## ELIGIBILITY FOR ADMISSION FOR INTERNATIONAL STUDENTS

**After Class XII:** Total duration of the program is 5 years. XII with at least

Student should have passed class XII with at least

- ▶ 50% in Physics, Chemistry and Biology in Class XII and passed in English
- ▶ Should have Physics, Chemistry and Biology in class XI

▶▶ Minimum 50% in Physics, Chemistry and Biology in Class XII and passed in English

▶▶ Should have passed with Physics, Chemistry and Biology in class XI

▶▶ Preference to students with better academic credentials

XIIth pass Students are admitted to a 1 year pre-medical program leading to a bachelors degree. They will then be admitted to a 4 year MD program equivalent to MBBS in India.

**After Bachelors Degree:** Total duration of the course is 4 years

Students should have passed Bachelors with science

Student should have passed class



Students Help Desk

## FEES AND SCHOLARSHIPS

▶▶ **Fees:** Of the AMA School of Medicine is given in Annexure

▶▶ **Scholarship / Merit Awards:** For incoming batch - 30 % of the student will receive some kind of financial aid.

**MCI preparation :** Study material will be provided in Manila. Followed by coaching in INDIA to ensure 100% MCI pass rate (At students own cost).



Practical demonstration in Hospital



Inside the Hospital





Practical Lab, AMA School of Medicine

## EDUCATION SYSTEM

**AMA School of Medicine** is part of the AMA Education System. Dr. Amable R. Aguiluz V, is the founder of the Group. He has been an Ambassador of the Philippines to the Gulf Countries. Named after the initials of his father's name, Amable Mendoza Aguiluz V, Sr. The **AMA Educational System** include the following educational institutes



Students accommodation, AMA Makati

### **AMA International University (Bahrain)**

A partnership between the Kingdom of Bahrain and AMA Education System serving AMA's programs in the Arab Region.

### **AMA University (Philippines)**

Founded in 1980 as AMA Computer School. The Quezon City campus became AMA University on August 20, 2002 with permission from CHED. ISO 9001-certified in 1999 by Société Générale de Surveillance International Certification Services. In 2003, AMA University inked a partnership for programs with Carnegie Mellon University. In 1991 accreditation for AMA Computer School in the American League of Schools and Universities (ALOCU), making AMA the first non-American school to do so. AMACC is an official member of the John F. Kennedy Educational Institute in Japan and is accredited by the National Computing Centre, UK.

### **AMA Computer School**

Offers the same programs as AMA University. The campuses in East Rizal, Makati, Las Piñas, Malolos, Biñan, Pasig, Fairview, Capiz, Cebu, Cagayan de Oro, Davao are among these.

### **St. Augustine School of Nursing**

Educational institutions across the Philippines offering short Medical-related programs like caregiver course.

### **AMASchoolOfMedicine**

Offers Medical-related courses like Nursing and Medicine

### **Under Construction**

The AMA Education Group is planning a campus named **University Town**, to be complete in celebration of its 35th anniversary. It is a 50-hectare property in Ara Vista Village in General Tria, Cavite, patterned on traditional Western Universities that spurred rapid development in the Host Township. The University Town will serve as another type of multi-use development, a primary institutional complex in a park-like setting. A network of open space and walkable distances from once destination to the other is laid out to encourage users to walk instead of using vehicles. This should be ready by 2016



Classroom

## Syllabus & Tenure of Education

**Syllabus:** Was drawn up by Doctors educated in Harvard Medical School, USA and meets the latest international standards of Medical Education.

**Students after class XII** take 5 years to complete medical education **Students with Bachelors Degree** take 4 years to complete medical education

**Pre-Medical:** Students from India after class 12 first enrol in a Pre-medical course for 1 year to get equivalency in Philippines and be eligible for admission to the 4 year medical course. Students with a Bachelors Degree can be admitted directly to MD course.

**MD or MBBS Course:** The Medical Course in the Philippines is called MD and it is equal to MBBS in India. The four-year medical course progresses from the study of the normal to the abnormal human being. Most subjects are yearly courses taken up for two semesters.

The final year or clinical clerkship is mainly spent in actual patient care in affiliated Hospitals serving as the clinical laboratory. Hospital rounds and group discussions give the student a good perspective on bedside manners, diagnosis and management. The clerks rotate through the different clinical departments for 48 weeks with periodic evaluation. The University has arrangement with 3 hospitals Govt. Hospitals and the AFP Hospital for Clerkship.

The syllabus is as follows.

**Year 1 Pre Medical - Trimester - Psychology and Related Subjects**

**Year 2 MD 1st year: Normal Human Body**

Cell, basic tissue, integumentary system, Musculoskeletal system, Hematology, Immunology, Head, Neck, Special Senses, Gastrointestinal, Nutrition, Reproductive, Endocrine, Cardiovascular, Pulmonary, Renal, Nervous System, Genetics, Perspectives in medicine and history of medicine, Applied Epidemiology, Behavioural medicine 1, Practise of Medicine 1

**Year 3 MD 2nd Year: Mechanism and Management of Human Disease**

Pharmacology, Microbiology, Parasitology, Pathology, Cardiovascular, Pulmonary, Renal, Hematology, Immunology, Infectious Disease, Integumentary, Musculoskeletal, Research Methodology, Principles of Surgery, Medical Bioethics, Medical Research Projects. Behavioural Medicine 2, The Practice of Medicine (History taking, Physical Examination, Diagnostic Skills)

**Year 4 MD 3rd Year: Mechanism and Management of Human Disease**

Clinical Neurosciences, Special Senses, Endocrine, Gastrointestinal-Nutrition, Men, women and Children's Health, Management of Health Programs, Behavioural Medicine 2, Research projects, Legal Medicine and Medical Jurisprudence, Medical Informatics, Special Lectures, The Practice of Medicine 3 including Procedural Skills.

**Year 5 MD 4th Year: Clinical Clerkship Program (12 months)**

Internal Medicine, Surgery, Pediatrics, Obstetrics & Gynecology, Eye, Ear Nose and Throat, Psychiatry, Community Medicine, Electives.

Actual view of Makati City, Metro Manila

[www.amaschoolofmedicine.com](http://www.amaschoolofmedicine.com)



## Photos of Indian Students studying in AMA



Aadil H. Seikh



Abinash R. Naik



Aditya A. Nalawade



Afreen Hamid



Aishwarya PVA



Ajith Kr V



Amarjit Singh



Anand Mohan



Anthoniraj P



Apurv Gupta



Arjun Yadav



Ashish Rawat



Atasi Roy



Benjamin Raja



Bhanu P. Yellapu



Bhaskar Mudgil



Debasish Mohanty



Dharmendra Ola



Dheeraj Saini



Diksha Rani



Divya Arun



Dunger S. Chaudhary



Harit Dineshbhai



Harsh A. Bhatt



Himanshu Pahuja

## Photos of Indian Students studying in AMA



Inam ul Manan



Ishan



Jacob



Jahnvi Anand



Kuldeep Prakash



Mahendra Thakhar



Md. Shariq



Mohit Kumar



Mohit Tiwari



Mohit



Mrigakshi Gumber



Namita Agarwal



Nandhu Kumar



Narendra Raj



Nikitha N.



Pothigai Petchimuthu



Prabhat Kasanna



Prabhu M



Pramod



Priyanka Gowda



Priykrit Sangwan



Pushpender



Rajendra Bhatashwar



Reetu



Reshma Rajeev

## Photos of Indian Students studying in AMA



Rohit Jain



Rohit Saini



Sahil Yadav



Sangeethraj



Sangram Jena



Sarvesh Sharma



Satish Yadav



Shanti R. Gupta



Shivdeep



Somaya Rastogi



Suraj Bargahi



Syed Rashid Jafri



Tahir Farooq



Thanu Priya



Uma Maheswari



Uphalkumar M. Patel



Vaibhav Kumar



Vikash Jaiswal



Vivek Majithia



Vivek Patel



Yadendra Saini



Yoga Sri



Yogendra P. Yadav



Yudishthar Singh



Zeeshan Ali Khan

# Comparison of MBBS in Philippines with other Countries

## PHILIPPINES

## CHINA / RUSSIA / UKRAINE ETC

- |  |  |
|--|--|
| <p>1. English Advantage: Biggest advantage of Philippine is English. Just as Indians are educated in English as India was a colony of UK; Philippines-was a US colony. English is an official language in Philippines. School is in English from class I – like in India</p> <ol style="list-style-type: none"><li>No new language needed to be learnt.</li><li>Time is spent on medical education and not on language: Better Education!!</li><li>94% of population speaks English. Students converse with patients fluently – unlike in non English speaking countries.</li><li>Teachers speak English and can explain well to Students – no communication problems.</li></ol> | <p>1. Local Language is not English: Students from India going to China, Russia, Ukraine, Armenia, Georgia and other non English speaking countries need to learn the local language in order to talk to patients &amp; locals.</p> <ol style="list-style-type: none"><li>Need to pass a competency test in the local language – Chinese or Russian</li><li>Time spent in study of local language</li><li>Difficult to understand what patients say. Improper learning.</li><li>Teachers know Chinese or Russian. They are NOT fluent in English &amp; cannot explain subject properly to the students. Many student complaints on this issue.</li></ol> |
| <p>2. US &amp; International Job Advantage: Philippines: Largest supplier of trained nurses &amp; Doctors to USA &amp; several other countries.</p> <ol style="list-style-type: none"><li>Strong culture of giving USMLE &amp; going to the US for jobs. Advantage Philippines.</li><li>Alumni work in USA, UK, Singapore, Gulf etc. Good for networking and linkages for jobs.</li></ol>  | <p>2. Little International Exposure</p> <ol style="list-style-type: none"><li>There is no culture of going overseas for jobs in China, Russia or Ukraine.</li><li>Few students from these Countries go overseas for medical jobs – no strong alumni base or linkages</li></ol>   |
| <p>3. Superior Quality Education:</p> <ol style="list-style-type: none"><li>Teachers are all fluent in English</li><li>Some Teachers are US educated and can offer guidance and advise on overseas careers.</li><li>High standard of education compared to non English countries.</li></ol>  | <p>3. Poor Quality of Education</p> <ol style="list-style-type: none"><li>Teachers native language is Chinese or Russian. They teach in badly accented English.</li><li>Local Teachers are not good guides for overseas careers due to limited exposure.</li><li>No gearing for USMLE. Standards are lower as compared to Philippines</li></ol>  |
| <p>4. Tropical Country: Philippines a tropical country.</p> <ol style="list-style-type: none"><li>Diseases common to India are found in Philippines</li><li>Ease of Living – similar temperature to India</li></ol>  | <p>4. Temperate countries with snow</p> <ol style="list-style-type: none"><li>Students do not get clinical exposure to tropical medicine</li><li>In winter there is snow fall and the temperature falls to -20°C.</li></ol>  |
| <p>5. Many Patients: During hospital work medical students get exposure to many patients in Philippines.</p>   | <p>5. Limited Access to Patients &amp; Language Barrier: Language barrier, hence students have limited access to patients.</p>   |
| <p>6. Low Fees: Fees are low. It takes only 4 years and 10 months to complete. Very affordable Education</p>   | <p>6. High Fees: China / Russia is more expensive and take longer to complete from 5 to 6 years, so cost of life is more.</p>  |
| <p>7. Clinical Rotation in USA Possible:</p> <ol style="list-style-type: none"><li>Clinical rotations in USA are counted in your grade. Exposure from US Hospital helps in jobs in the USA after USMLE.</li><li>University or Agents help you arrange for clerkship or you can arrange yourself in the USA.</li></ol>  | <p>7. No facility of clinical rotations overseas. Teachers in China, Russia &amp; Ukraine have limited exposure to the USA and cannot guide you in this matter.</p>  |
| <p>8. Makati, Metro Manila City:</p> <ol style="list-style-type: none"><li>Cosmopolitan city with modern facilities</li><li>Students feel at home. Many tourists. Traditionally the locals welcome foreigners. Everyone knows English</li><li>Getting visa is very easy</li><li>Food: Many cuisines including Indian is available.</li></ol>   | <p>8. Not in Capital</p> <ol style="list-style-type: none"><li>Not easy to travel due to the language barrier in China, Russia or Ukraine.</li><li>Not all countries have a strong tourism base.</li><li>Visa issue is more complicated.</li><li>Indian food is not available.</li></ol>   |

# Comparison between AMA and Other Universities of Philippines

## AMA SCHOOL OF MEDICINE

## OTHER UNIVERSITIES

- |   |   |
|---|---|
| 1. AMA offers BS degree for Pre Medical   | 1. Many offer B.A. Degree   |
| 2. Only College where you can do BS (Pre Medical) in one year.  | 2. BS takes a minimum of 1.5 to 2 years.  |
| 3. BS +MD complete duration is 5 years.   | 3. BS +MD duration is 5.5 to 6 years.   |
| 4. Only AMA offers internship as a part of BS Syllabus (Our students have interned in Companies like Cognizant Technology Solutions, Hospitals, etc.) | 4. No Internship in BS. Only theory.  |
| 5. Only AMA guarantees you a seat in MD(MBBS) after successful completion of BS.  | 5. No guarantee of seat in MD(MBBS) after BS.   |
| 6. Only AMA mentions of admission in MD after BS in its admission letter.   | 6. Admission letter mention only admission to BS.   |
| 7. Only appearance in NMAT is necessary for admission to MD.  | 7. 40 percentile necessary in NMAT for admission to MD(MBBS), if students gets below, they are refused admission in MD(MBBS). |
| 8. Nominal Scholarships are provided to 30% of the class, so as to create an atmosphere of learning.  | 8. No Scholarships.   |
| 9. Hospital visit starts from first year of MD.   | 9. Hospital visit in Last year.   |
| 10 Indian Food is available   | 10. Indian food may not be available  |
| 11. In campus accommodation available for AMA, Cavite.  | 11. Most don't have in campus accommodation   |

## STEPS FOR ADMISSION

**Step 1** Eligibility :  
Passed / Appearing 10+2  
Minimum 50% (40% for SC/ST/ and OBC) in PCB

**Step 5** Documentation + Visa Processing  
Pay second installment and submit documents for Visa Processing

**Step 2** Submit Application Form  
with ₹ 10,000/- registration fees

**Step 6** All student will get SIM Card of Philippines and pen drive containing MBBS material worth more than Rs. 1,00,000/-

**Step 3** University Issues Admission Letter

**Step 7** Fly to Philippines in a group

**Step 4** Deposit partial tuition fees of \$ 4,300 in University Bank Account for confirmation of seat

**Step 8** NVF will provide assistance during airport pick up and admission into college

# Welcome to AMA School of Medicine



**G.Tobat Medical Foundation**

12, G.F, D.D. Chamber, 10/54, Desh Dandhu Gupta  
Road, Karol

Bagh, New Delhi-110005

[www.gmfadmission.in](http://www.gmfadmission.in)

Ph. : +91 9899065852

E-mail : [info@gmfadmission.in](mailto:info@gmfadmission.in)



[www.amaschoolofmedicine.com](http://www.amaschoolofmedicine.com)